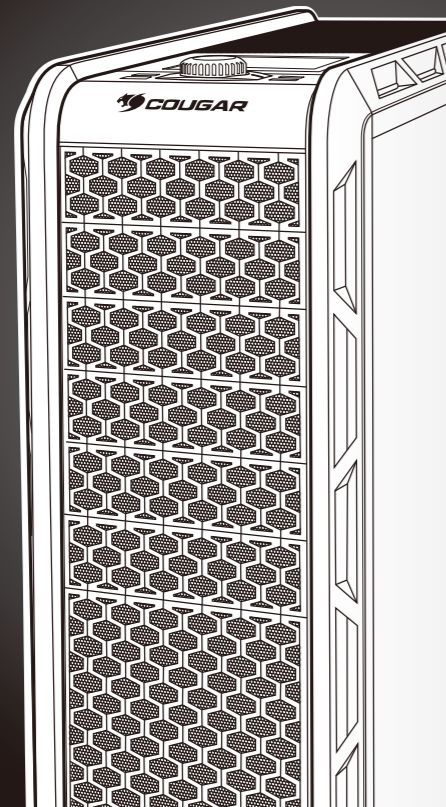




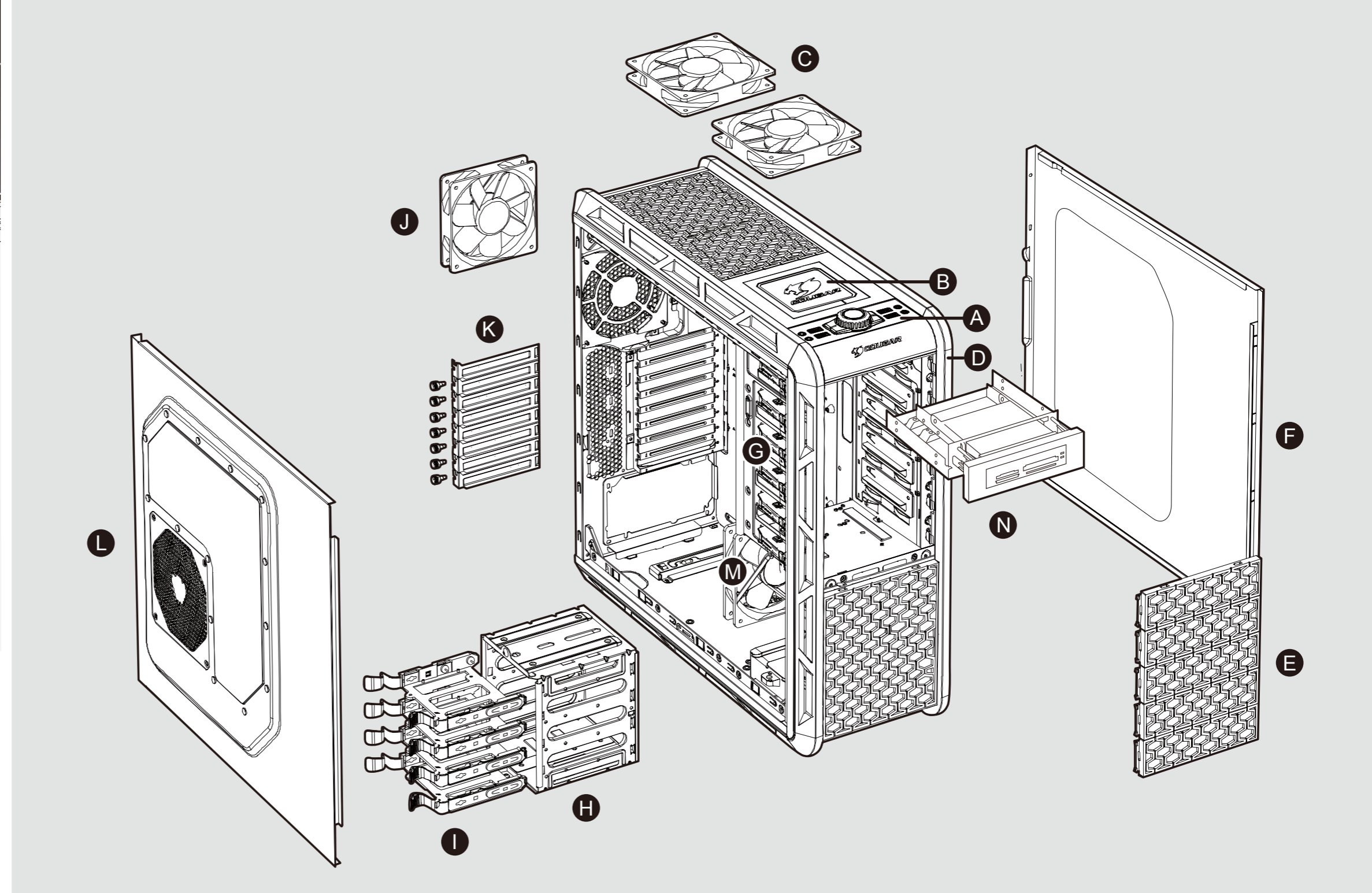
Evolution



Features

- Innovative & Integrated UI for user friendly design
- Advanced two USB 3.0 ports for maximum data transfer speed
- Unique honeycomb & mesh hybrid intake design with rugged strong appearance
- Top access external 3.5" & 2.5" HDD/SSD for easy mobile data transfer
- Integrated fan speed controller for dual-way fan control
- Support for 5 fans: front 120mm fan x1; rear 120mm fan x1; top 120mm fan x 2; left-side panel 140mm fan x1(optional)
- Support for very long video cards (up to 12" / 305mm)
- Eight PCI slots provides flexibility for multiple graphics card solutions
- Top-notch screw-less mechanisms on all disk drive bays
- Shockproof HDD tray design for 3.5" HDD and compatible for 2.5" HDD/SSD
- Holes with covers for liquid cooling solutions
- Retaining holes in the motherboard tray for easy accessing the backplate of the CPU cooler
- Cable routing holes on the motherboard tray for easy routing and hiding cables behind the MB tray

Case Type	Middle Tower
Dimension (W / H / D)	223 (W) x 523 (D) x 514 (H) mm
housing material	0.7mm SECC-Steel
Motherboards	ATX / Micro ATX
5.25" Drive Bay	6 Exposed 4 Hidden
3.5" Drive Bay	1 Exposed Converted from one 5.25" drive bay
Hot swap bay	3.5"/2.5" x 1
Expansion Slots	8
I/O Panel	USB 3.0 x 2 MIC x 1 USB 2.0 x 2 HD Audio x 1
Cooling System	Front: 120mm fan x 1 Top: 120mm fan x 2 Rear: 120mm fan x 1 Side: 140mm fan x 1 (optional)
Maximum Compatibility	CPU cooler height limitation: 180mm Graphic card length limitation: 305mm



A Innovative & Integrated UI for user friendly design, including USB3.0x2/USB2.0x2/audio/mic, dual way fan control system can quickly adjust cooling performance & noise level

B Top access external 3.5" & 2.5" HDD/SSD for easy mobile data transfer

C 120mm fan x 2 for top cover, can rapidly exhaust the hot air, keep the inner temperature cool

D Front panel, removable to easily install 5.25" devices

E Unique honeycomb & mesh hybrid intake design 5.25" shield

F Right side panel, easily upgrade your hardware system

G Tool-less 5.25" drive bays, provide plenty of expansion

H Removable 3.5" HDD cage for easily install front fan

I Shockproof HDD tray design for 3.5" HDD and compatible for 2.5" HDD/SSD

J 120mm fan for rear cover, can rapidly exhaust the hot air, keep the inner temperature cool

K Eight PCI slots provides flexibility for multiple graphics card solutions

L Left side cover with 140mm fan intake design

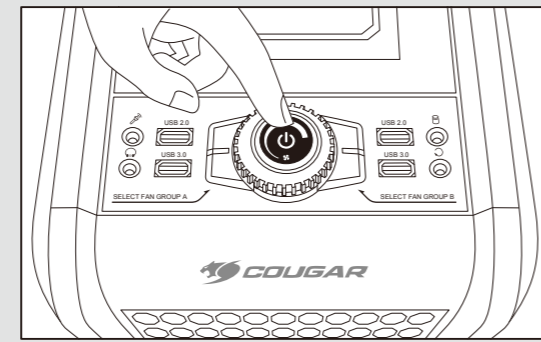
M 120mm fan for front panel, effectively cool the HDD & Graphic Card

N 5.25" to 3.5" conversion kit adapt to 3.5" device or card reader

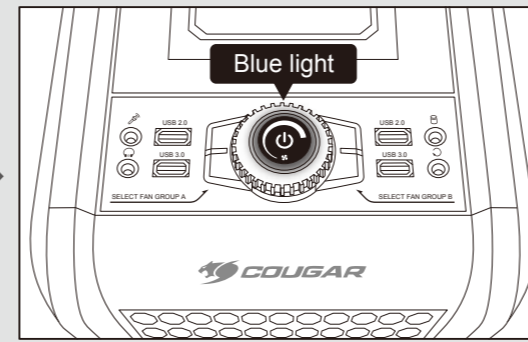
Accessory Kit

	x1		x12
	x3		x20
	x2		x8
	x2		x1
	x6		x12
optional 			x2

Start Power

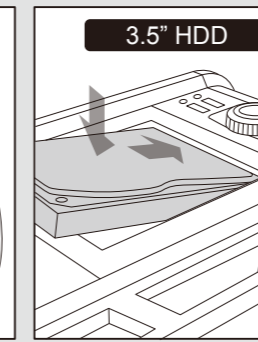


Push the "START POWER"

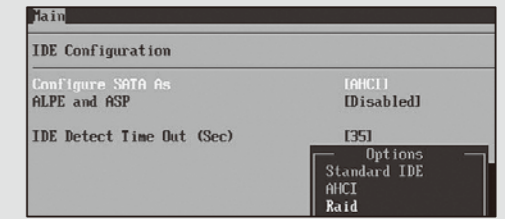
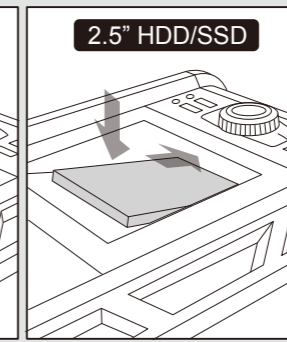


The blue LED lights when PC power on

External 3.5" & 2.5" HDD/SSD dock



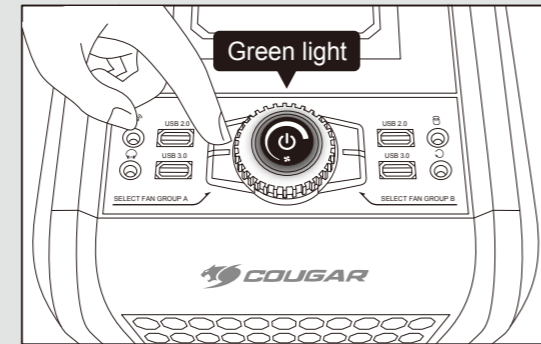
You can easily install 3.5" HDD or 2.5" HDD/SSD in the top access external dock



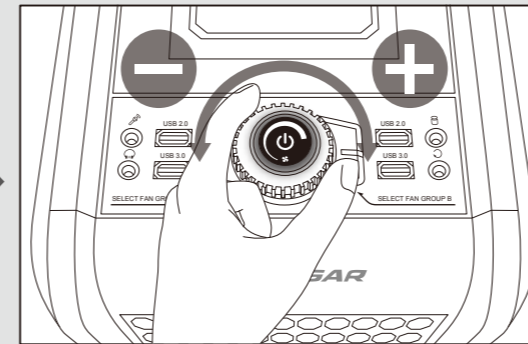
How to use the hot-swap feature of the external docking:
 1. Make sure to install all related drivers that come with your motherboard.
 2. Connect the SATA cable to SATA connector on the motherboard.
 3. Connect the power cable to power supply.
If your hot-swap device has no function after installation, please refer to the following settings.
 1. Turn on the AHCI function in the BIOS to activate the hot-swap feature.
 2. Reinstall your computer operating system.

Dual-way fan control system

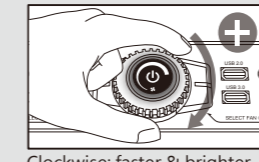
There are two fan control buttons to control two group fans independently (fan group A & fan group B)



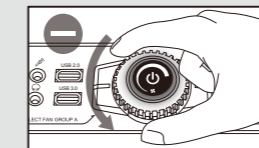
Push fan switch button, it will switch to fan control mode, the green LED lights



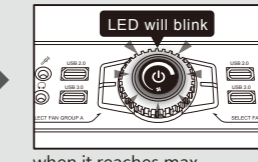
Rotate the fan control button to adjust the fan speed clockwise: faster / counterclockwise: slower



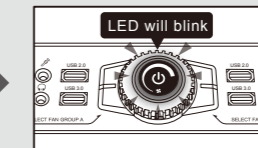
Clockwise: faster & brighter



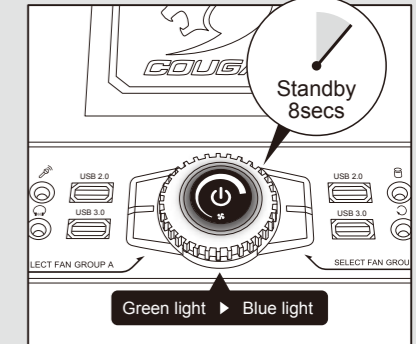
Counterclockwise: slower & dimmer



LED will blink when it reaches max. fan speed, LED will blink



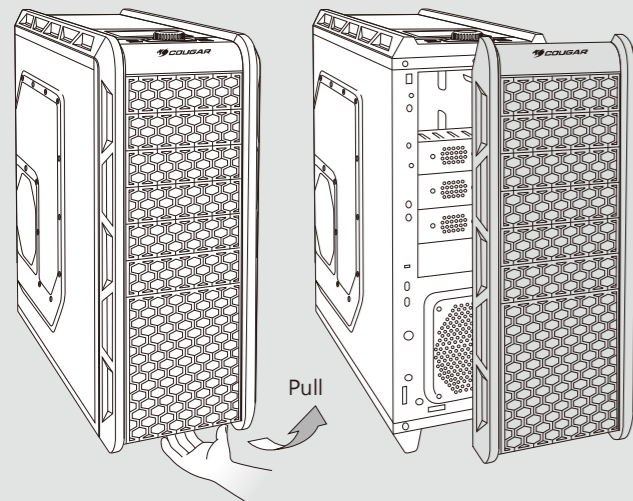
LED will blink when it reaches min. fan speed, LED will blink



If we stop using fan control it will return to blue LED light

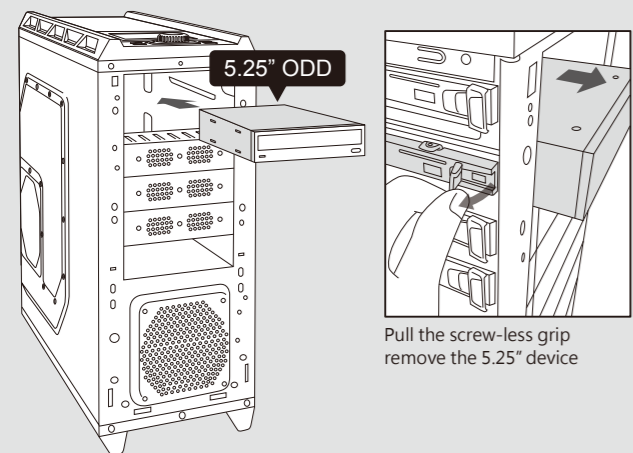
How to install the 5.25" devices.

Remove the front panel

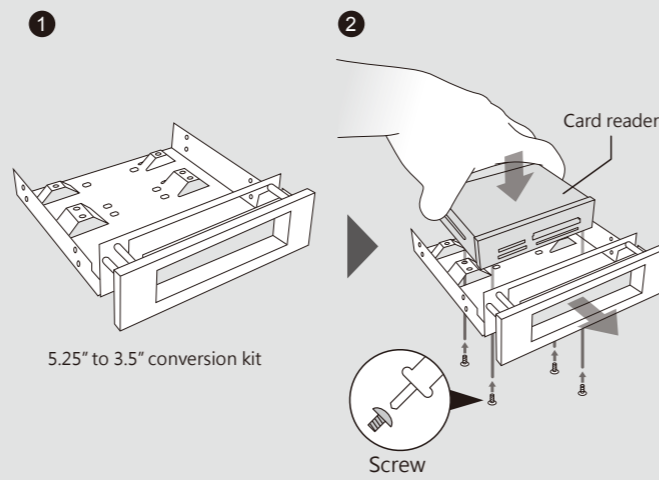


How to install / remove the 5.25" devices.

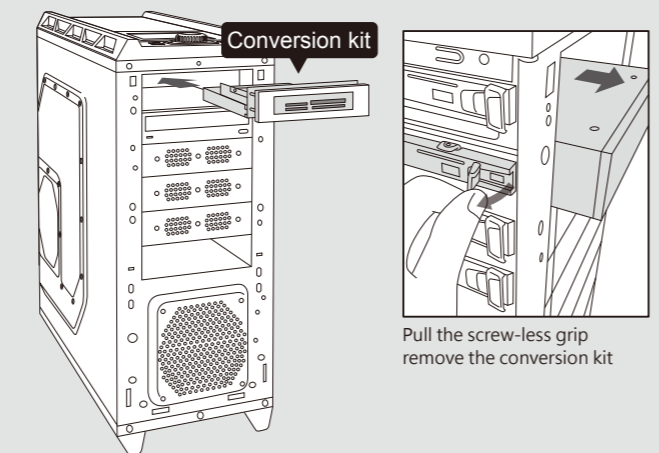
Insert the device into 5.25" drive bay it will be locked automatically



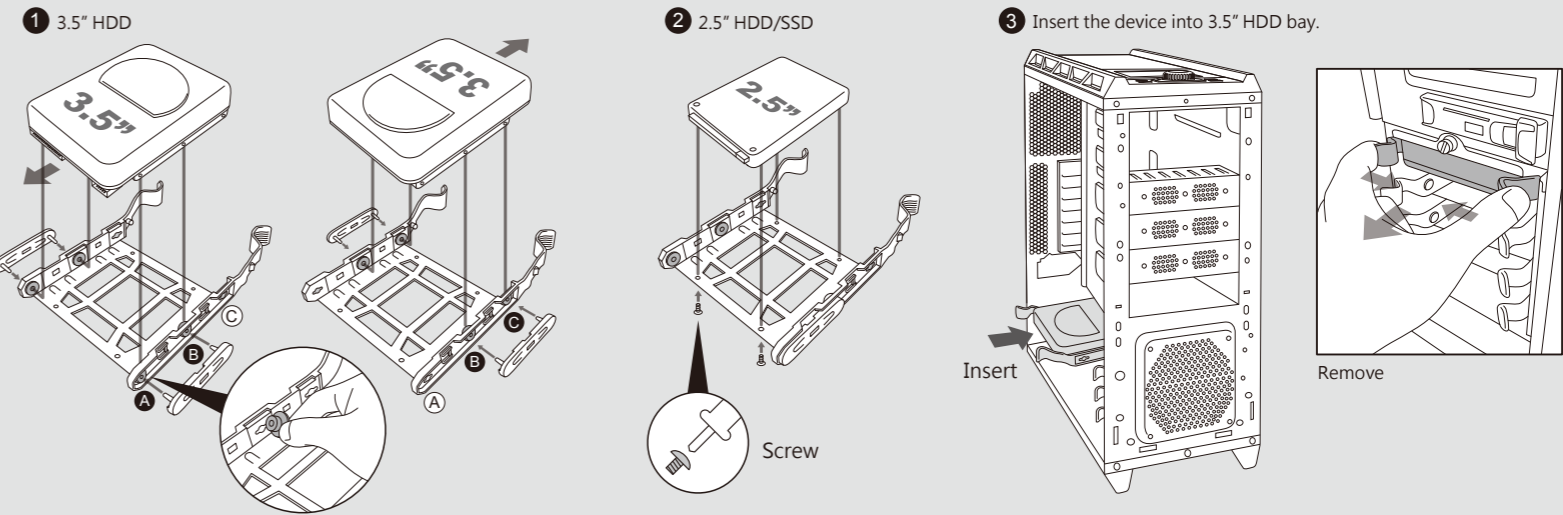
How to install the 5.25" to 3.5" conversion kit



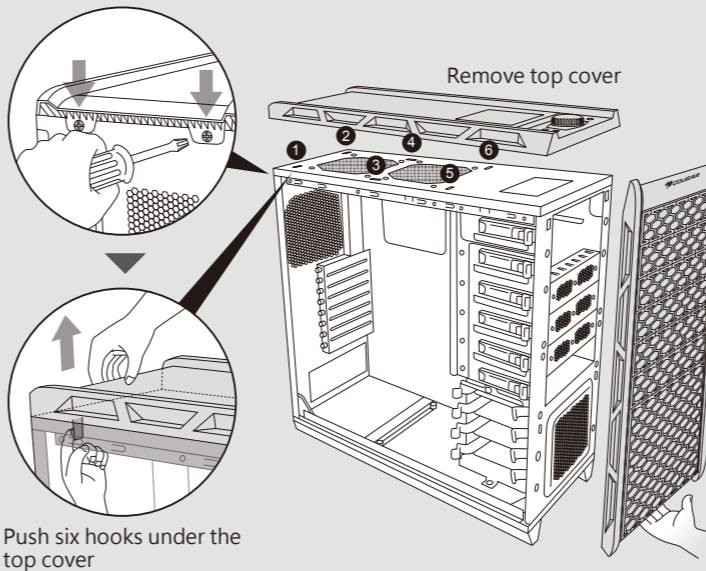
Insert the conversion kit into 5.25" cage



How to install the 3.5" & 2.5" HDD/SSD



How to install the Fan



FAN GROUP A
 A B Air In x2

FAN GROUP B
 C D E Air Out x3

⚠ Fan group A cable max current loading is 1A

⚠ Fan group B cable max current loading is 1A

The fan control cable can connect with two group of fans (air in A, B & air out C, D, E) controlled by the fan switch buttons

