



Evolution

for gaming spirit



COUGAR extends the line to a full tower with the Evolution makes it easy to build a professional gaming system. It accommodates all sorts of high-end hardware from its spacious interior, with excellent cooling solution from the maximum 6 fans, integrated fan speed controller, eight PCI slots provides flexibility for multiple graphics cards, and plenty of room for large, power-hungry components, the COUGAR Evolution full tower represent a new evolution for gaming spirit.

Features

- Innovative & Integrated UI for user friendly design
- Advanced two USB 3.0 ports for maximum data transfer speed
- Unique honeycomb & mesh hybrid intake design with rugged strong appearance
- Top access external 3.5" & 2.5" HDD/SSD for easy mobile data transfer
- Integrated fan speed controller for dual-way fan control
- Support for 6 fans: front 120mm fan x1; rear 120mm fan x1; top 120mm fan x 2 (optional); bottom 120/140mm fan x1 (optional); left-side panel 140mm fan x1 (optional)
- Support for very long graphics cards (up to 12"/ 305 mm)
- Eight PCI slots provides flexibility for multiple graphics cards solutions
- Top-notch screw-less mechanisms on all disk drive bays
- Shockproof HDD tray design for 3.5" HDD and compatible for 2.5" HDD /SSD
- Holes with rubber covers for water cooling solutions
- Retaining holes in the motherboard tray for easy accessing the backplate of the CPU cooler
- Cable routing holes on the motherboard tray for easy routing and hiding cables behind the MB tray
- Vented slot covers for better cooling performance
- Air filter for the power supply fan
- Black thumbscrews to easily fasten expansion cards



INNOVATIVE & INTEGRATED UI FOR USER FRIENDLY DESIGN



INTEGRATED FAN SPEED CONTROLLER FOR DUAL-WAY FAN CONTROL



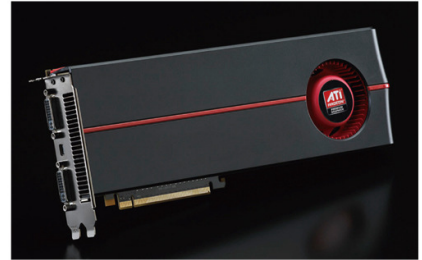
TOP ACCESS EXTERNAL 3.5" & 2.5" HDD/SSD FOR EASY MOBILE DATA TRANSFER



TOP-MOUNTED 120mm FAN x 2



LEFT-SIDE PANEL 140mm FAN x 1



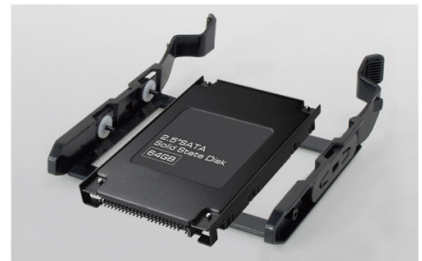
SUPPORT FOR LONG GRAPHICS CARDS (UP TO 12"/305mm)



5.25" SCREW-LESS MECHANISMS



SHOCKPROOF HDD TRAY DESIGN FOR 3.5" HDD



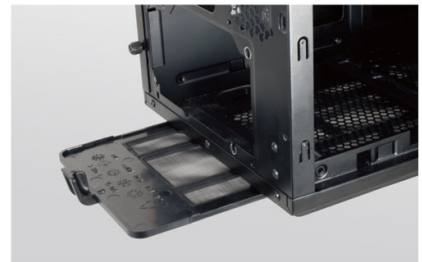
HDD TRAY COMPATIBLE FOR 2.5" HDD/SSD



EIGHT PCI VENTED SLOT COVERS FOR BETTER FLEXIBILITY & COOLING PERFORMANCE



HOLES WITH COVERS FOR WATER COOLING SOLUTIONS



AIR FILTER FOR THE POWER SUPPLY FAN



Evolution Spec.

Case Type	Full Tower
Dimension (W / H / D)	223 (W) x 514 (H) x 523(D) mm
Housing material	SECC
Motherboards	ATX / Micro ATX
5.25" Drive Bay	6 Exposed
3.5" Drive Bay	4 Hidden
2.5" Drive Bay	4 Hidden (converted from 3.5" HDD tray)
External SATA HDD/SSD dock	3.5"/2.5" x 1
Expansion Slots	8
I/O Panel	USB 3.0 x 2 USB 2.0 x 2 MIC x 1 HD Audio x 1
Cooling System	Front: 120 mm fan x 1 Top: 120mm fan x 2 (optional) Rear: 120 mm fan x 1 Bottom: 120 / 140 mm fan x 1 (optional) Side: 140 mm fan x 1 (optional)
Side Panel	Transparent Window
PSU	Standard ATX PS2 (optional)
Maximum Compatibility	CPU cooler height limitation: 180mm Graphic card length limitation: 305mm